

The KONE logo is displayed in white capital letters on a blue background. Above the logo, a blue overhead sign features the KONE logo, the word "Ulos" (Finnish for "Exit"), the word "Exit" in English, and the Finnish address "Tikkurila Dickursbyvägen".

KONE

Ulos  
Exit

Tikkurila  
Dickursbyvägen

# Reliable People Flow® for demanding transit environments

KONE TransitMaster™ 140

[www.kone.ae](http://www.kone.ae)

Dedicated to  
People Flow™



# Reliable People Flow for demanding transit environments

With over 110 years of experience and a strong track record in safety, KONE is your trusted partner, dedicated to ensuring smooth and safe People Flow. KONE escalators and autowalks use our proven, reliable technology designed to meet the wide-ranging needs of different buildings worldwide.

The versatile KONE TransitMaster™ 140 is a public transportation escalator designed to enable the fast and seamless flow of large numbers of passengers who need to quickly reach their destinations.

- 01 Industry-leading reliability and quality
- 02 Differentiate with a redefined user experience
- 03 Safety = peace of mind
- 04 Reduced environmental impact
- 05 Plan for success with KONE as your partner
- 06 Flexibility to match your building requirements



## Key specifications



Vertical rise  
up to 35 meters



Inclination  
27.3° / 30°



Step width  
800 / 1000 mm



Speed  
0.5 m/s, 0.65 m/s,  
0.75 m/s

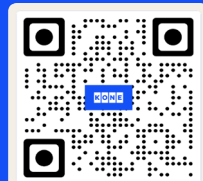


ISO 25745-3 Energy  
performance class  
up to A+++



Digital  
experience

Read more about  
KONE Escalator DX



SCAN ME

[www.kone.ae](http://www.kone.ae)



# Industry-leading reliability and quality

All KONE solutions follow strict quality standards which are dedicated to provide efficient and smooth People Flow experience.

We pay special attention to ensure that the quality and durability of the selected components match the environment and People Flow requirements, minimizing any unplanned downtime.

## **KONE has been a leader in delivering reliable, safe People Flow for more than 110 years**

- Tens of thousands of installations all around the world
- Reliability and safety guaranteed under even the most demanding operating conditions

## **Optimized material selection for quality and reliability:**

- Proven technology on component level
- Usage of wear resistant materials
- Optional permanent monitoring of escalator

## **Certified supply chain**

- Suppliers are required to comply with international standards
- All of our production operations are certified according to the ISO 14001 standard.



## **KONE Kunshan escalator factory**

KONE Kunshan escalator LEED gold certified factory is the largest escalator production base in the world, covering an area of 29,000 square meters. Around 95% of the KONE escalators supplied globally are from the Kunshan factory.

## **The most comprehensive escalator performance test in the industry**

The KONE factory is the first and only factory in the industry to test every escalator produced, for noise, vibration, speed detection, and energy consumption rates – ensuring consistent quality, passenger safety, and excellent ride comfort.



# Differentiate with a redefined user experience

Enhance your escalator in a way that suits you. KONE DX Escalators lets you mix and match features and services, so you can tailor your escalator to what matters most. Transform how people move around your building with next-generation safety and wayfinding tools, and add a little magic to everyday moments. Let's move into the future together.



## KONE Escalator Media Screen

Create memorable journeys with media screens that inform, guide and delight passengers while boosting revenue with advertising and branding opportunities.



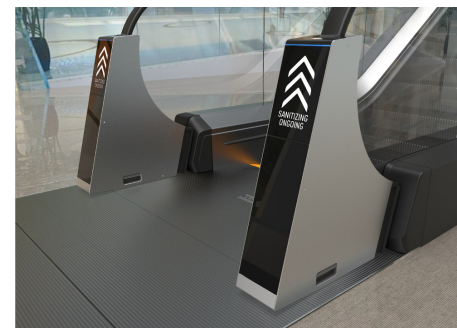
## KONE Escalator Design Lighting

Deliver intuitive experiences for wayfinding and accessibility with escalator lighting for handrails and skirting—and delight passengers with themes for special occasions.



## KONE 24/7 Connected Services

KONE 24/7 Connected Services is a discreet/intelligent way to increase uptime thanks to predictive maintenance and instant alerts that keep people moving around your building smoothly—today and tomorrow.



## KONE Handrail Sanitizer Premium

Encourage safer behavior with visible handrail sanitization, designed to protect passengers against viruses, bacteria and dirt, and make holding on worry-free, a must to have in particular in airport where people from different countries are gathering together! Stay safe!





# Elevate your building

AI-assisted video monitoring delivers custom insights tailored to your needs, improving performance, optimizing flow, and intelligently identifying risks.

## KONE Escalator Video Monitoring

With KONE Video Monitoring, you can increase escalator uptime, optimize flow, and intelligently identify risks to encourage safer behavior.

The remote management platform gives you access to your equipment data and shows a live camera view. If something isn't right, it displays an instant alert and helps you respond to incidents faster with intelligent automations and actionable insights.



# Safety = peace of mind

All KONE escalators are equipped with standard safety features, required by Codes and Norms, including latest version of EN115. In addition to that KONE TransitMaster™ 140 can even meet the most critical safety requirements of every environment and location, including fire resistant options, strong corrosion resistance packages and high safety factors

For any specific need, our sales team will be pleased to offer a selection of optional features tailored to your needs, such as:

- Fall protection barrier and anti ride barrier and extended balustrade increase passenger protection to prevent falls and reduce misuse of the unit
- Traffic signalization, skirt lighting, yellow comb segment, step demarcations provide extra visual guidance for passengers to help them to have a smoother and safer ride
- Audible alarms increase clear guidance on escalator travel direction and improve passengers' attention
- Halogen-free cables
- Provisions for seismic locations
- Extended monitoring options with KONE 24/7 Connected Services and KONE Escalator Video Monitoring
- KONE TransVario chainless drive system minimizes the risk of disconnection between motor and main shaft, as well as synchronizing the movement of handrails and steps

For a complete list of standard and optional safety features please contact your local KONE sales representative.





# Safety = peace of mind



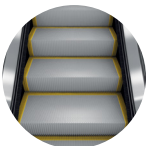
## Extra visual guidance

Traffic signalization, skirt lighting, yellow comb segment, step demarcations provide extra visual guidance for passengers to help them to have a smoother and safer ride.



## Audible alarms

provide clear guidance on escalator travel directions and enlarge users attention.



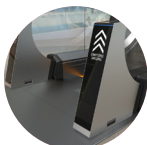
## Anti slip requirement

Anti-slip grade step surface reduces the chance of passengers slipping.



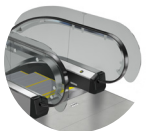
## Fire safety

maximised with halogen-free cables and fire fighting provisions.



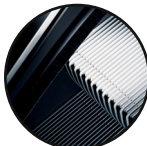
## KONE Handrail Sanitizer Premium

continuously reduces bacteria, viruses and dirt from the handrails and encourages users to hold the handrail



## Fall protection and anti-ride barriers

increase passenger protection and prevent falls and misuse of the unit.



## KONE skirt switch solution

reduces the risk of entrapment



## KONE 24/7 Connected Services

helps you to see the status of the escalator in real time to ensure safe operation.



## Video monitoring

improves operational performance and safety by automatically detecting pre-defined user behaviours.



# Reduced environmental impact

KONE has always been a leader in energy saving and innovative technology in the industry, and enjoys a world-wide reputation. All our escalators and moving walks have achieved A+++ energy performance certificates based on the ISO Standard 25745-3.

## Make your escalator more eco-efficient

- 01 Sustainable drive options**  
minimize energy consumption.
- 02 lubrication-free step chain**  
(optional) means no oil, a cleaner escalator and environment, reduced fire hazard, simpler cleaning and easier maintenance.
- 03 Long-lasting LED lighting**  
is up to 80% more efficient than fluorescent lighting and lasts up to 10 times longer.
- 04 Eco-efficient operational modes**  
save energy by slowing down or stopping the escalator completely when traffic is low. For example, when an escalator is empty, energy consumption is further reduced with KONE's smart star-delta operational mode, which regulates the current needed for different types of load situations.
- 05 The KONE TransVario**  
chainless drive system helps reduce energy costs and CO<sub>2</sub> emissions throughout the escalator's lifetime, thanks to optimized transmission. It also minimizes the amount of oil required.





# Escalator sustainability

At KONE, we want to contribute to better urban living by helping people move around in and between buildings, in ways that are smooth and safe. A great deal of that is about sustainable practices.

## Green building certifications

Installing an eco-efficient KONE TransitMaster™ 140 can help achieve green building accreditations such as LEED, BREEAM or Singapore Green Mark. For more information, contact your sales representative. We also have a third-party-verified Environmental Product Declaration (EPD) for KONE TransitMaster™ 140, available at [kone.com](https://kone.com).

## Eco-efficient escalator

KONE TransitMaster™ 140 has achieved A+++ energy performance certificate based on ISO standard.



BREEAM®



## EcoVadis Gold medals

KONE holds the EcoVadis Gold medal for its sustainability performance, being in the top 5% of all the assessed companies. The EcoVadis rating covers a broad range of non-financial management systems including environmental, labor and human rights, ethics, and sustainable procurement impacts.



## CDP's A list

KONE has been recognized by CDP for its actions towards reducing emissions, mitigating climate risks, and developing a low-carbon economy. KONE achieved a place on CDP's prestigious A List signifying that we rank among a small number of high performers.



## Forbes 2024 World's Best Employers list

KONE has been recognized as one of the best employers in the world by Forbes business magazine on their Forbes 2024 World's Best Employers list.





# Plan for success with KONE as your partner

Choose a partner with over a century of experience in delivering pioneering People Flow. Get expert advice from professionals and enjoy the peace of mind that comes with comprehensive support. KONE is with you every step of the way – from planning and design, through installation and maintenance, to modernization – for the entire life cycle of your building.

## Expert design and planning services

- Expert planning advice helps you specify the optimal solution for your building.
- Renowned engineering and design capabilities at your service can create tailor-made solutions to exactly meet your specifications.
- Easy-to-use online design tools save your time and effort during design process.
- Energy consumption calculations available for every individual escalator solution.
- Escalator lifecycle cost calculations available for budget planning.

## Safe and efficient installation

- Highly efficient installation methods result in considerable time savings and minimize disruption to other construction work.
- Strict quality criteria for each installation phase ensures the right fit every time.
- Continuous training, site audits, safety passports, certified Project Management, and proven methods ensure maximum site safety and on-time delivery.
- Eco-efficient installation processes minimize waste and maximize recycling.

## Quality assurance, modernization and professional maintenance

- KONE's own reliability laboratory tests and approves every component used in our escalator solutions.
- Modernization extends the equipment lifetime, and the recycling, reuse, and refurbishment of specific components and materials contribute to the circular economy. then put the point of global spare parts center and then last the one of preventive care.
- Preventive KONE Care® maintenance solutions and a comprehensive online service-reporting system make it easier to monitor and budget for escalator maintenance.
- Our global spare parts center stocks over 150,000 parts and offers 24-hour delivery for the most commonly requested parts.



# Flexibility to match your building requirements

## Flexible Features

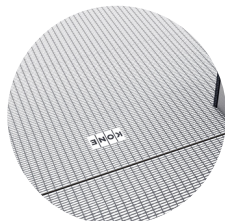
KONE TransitMaster™ 140 escalators are designed to fit all your needs, from parking places to central halls. KONE engineering capabilities will help you to fulfill your specifications in the best possible way.

## Tailor-Made Possibilities

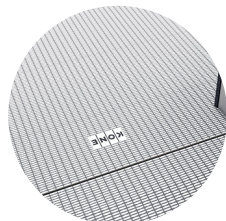
The renowned engineering and design capabilities are always available to realize the architectural vision with customized specifications for your premises.



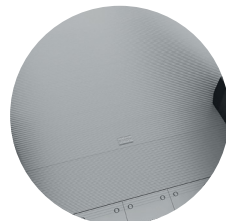
## Access covers



Aluminum access cover with stainless steel surface

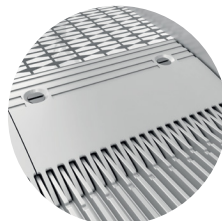


Aluminum access cover with etched stainless steel surface

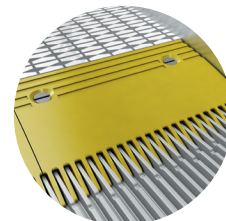


Natural ribbed aluminum

## Comb



Aluminum comb segments



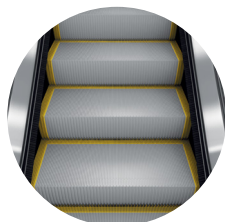
Aluminum with yellow powder coating



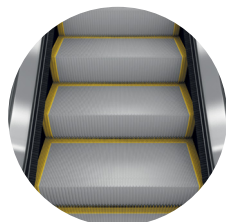
Aluminum with yellow plastic inlay

## Steps

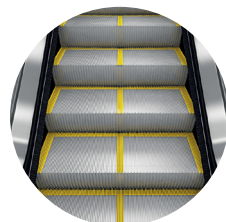
### Step demarcation



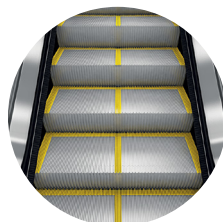
Yellow painted on 3 sides



Yellow plastic insert on 3 sides

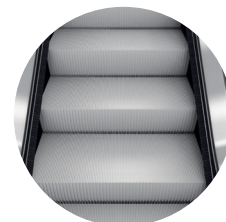


Yellow plastic insert on 3 sides and yellow painted demarcation in the center

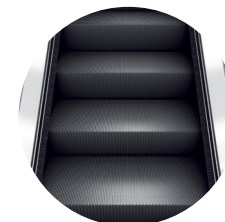


Yellow painted on 3 sides and in the center

### Step color

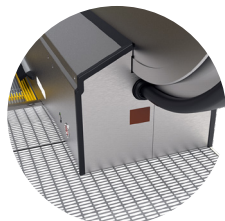


Silver painted



Black painted

## Front plate



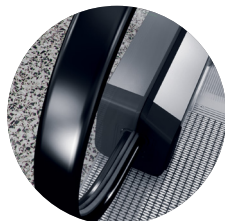
Satin polished stainless steel front plate for glass balustrade



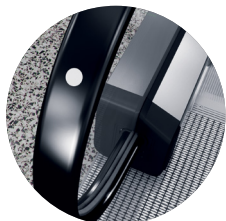
Satin polished stainless steel front plate for solid balustrade



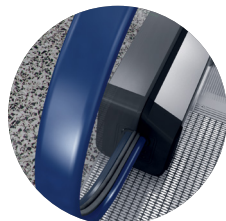
## Handrails



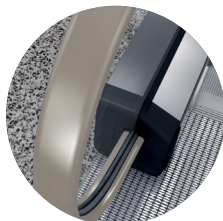
Black



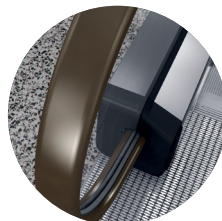
Black with white dots



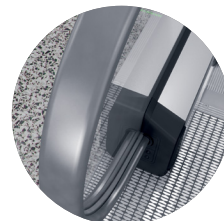
Blue



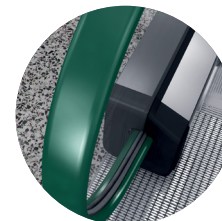
Beige



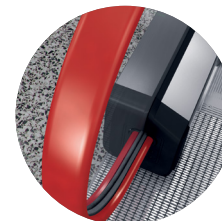
Brown



Gray



Green

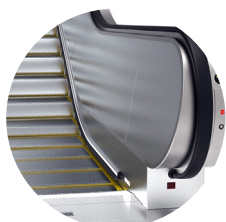


Red

## Balustrade



Clear glass balustrade panels

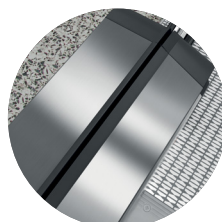


Brushed stainless steel solid inclined panels



Passenger fall protection barrier

## Decking



Brushed stainless steel

## Skirting

### Skirt

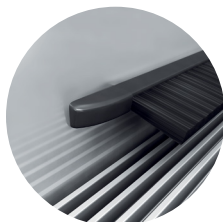


Brushed stainless steel skirt with clear anti-friction coating

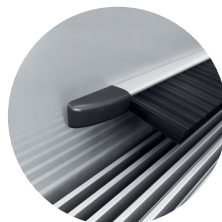


Sheet steel skirt with black anti-friction coating

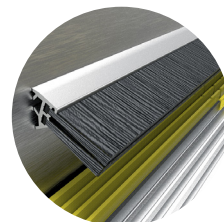
### Skirt brush holder



Black anodized aluminum



Clear anodized aluminum



Clear anodized aluminum, double brushes



## Cladding



Premium cladding stainless steel or sheet steel with any RAL color



Hairline stainless steel



Fitted by the customer



Media screen

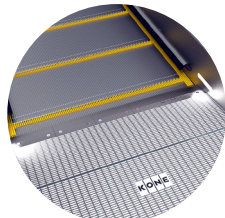
## Display



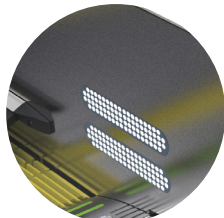
Diagnostic display

## Lighting

### Comb lighting



LED comb lighting (white)



LED multiple comb lighting (white)

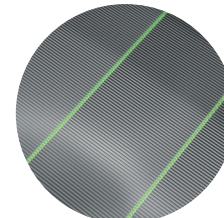
### Additional lighting



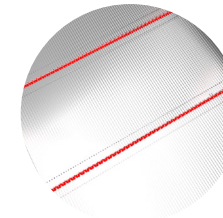
LED traffic light arrow in the decking



LED traffic light arrow for solid balustrade



Under step demarcation lighting green



Under step demarcation lighting red

## KONE Design Lighting

Hanrail, skirt, or both

### Static colors

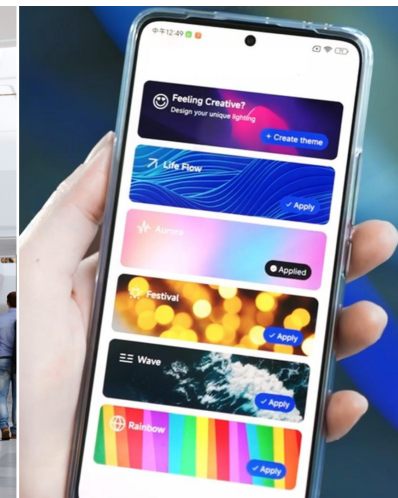
Infinite color spectrum (adjustable) and four color temperatures for white (3000 / 4000 / 5000 / 6000 K)

### 5 pre-defined Themes

LifeFlow / Aurora / Festival / Wave / Rainbow

### Alternatives moods

Whatever you prefer via app



## Change methods of lighting themes

Theme changes through the APP and the key switch in the skirt area. The design lighting connects the escalator electrical system and automatically changes according to the escalator conditions (ex. Running direction)









KONE provides innovative and eco-efficient solutions for elevators, escalators, automatic building doors and the systems that integrate them with today's intelligent buildings. We support our customers every step of the way: from design, manufacturing and installation to maintenance and modernization. KONE is a global leader in managing the smooth flow of people and goods throughout buildings. This makes us a reliable partner throughout the building life cycle. We are fast, flexible, and we have a well-deserved reputation as a technology leader, with such innovations as KONE 24/7 Connected Services and KONE UltraRope®. KONE employs over 60,000 dedicated experts to serve you globally and locally.

## UAE

### Dubai (Regional Office)

KONE Middle East LLC  
U-Bora Tower,  
C/O Al Abraj Str & Al Khaleej Str,  
Business Bay.  
P.O. Box 21474  
Tel: +971 4 279 4500  
[www.kone.ae](http://www.kone.ae)

## Kingdom of Saudi Arabia

### Riyadh (Head Office)

KONE Areeco Ltd  
King Fahad Road,  
Olaya District,  
Al Hamad Tower, Floor 8.  
P.O. Box 10142, Riyadh, 12212  
Tel: +966 9200 17055  
[www.kone.sa](http://www.kone.sa)

## Egypt

KONE LLC  
Plot no.10 B, Mohamed Naguib Axis,  
Fifth Settlement,  
O1 Mall, KONE 2nd Floor, New Cairo.  
P.O. Box 11841  
Tel: 0800 000 9733  
[www.kone.eg](http://www.kone.eg)

## Morocco

KONE Elevators & Escalators SARL  
Lot Marjana N6,  
Sidi Maarouf, Casablanca.  
P.O Box 20280  
Tel: +212 522 580211  
[www.kone.ma](http://www.kone.ma)

## Qatar

KONE Elevators WLL  
Ghanem Office Tower,  
Building No. 54, Street No. 640,  
Zone 23, Salwa Road,  
Bin Mahmoud Area, Doha.  
P.O. Box 37143  
Tel: +974 4488 8835  
[www.kone.qa](http://www.kone.qa)

## Oman

KONE Assarain LLC  
Hatat Complex B, Office 103, 1st Floor,  
Wadi Adai, Ruwi 112, Muscat.  
P.O. Box 1475  
Tel: +968 2465 7000  
[www.kone.om](http://www.kone.om)

## Bahrain

KONE Elevators WLL  
Building 767, Office number 61,  
Road number: 3629,  
Block number: 336,  
Adliya, Kingdom of Bahrain.  
P.O. Box 21303  
Tel: +973 1774 9271  
[www.kone.bh](http://www.kone.bh)

## Kuwait

Laila Tower, 14th floor, office 3,  
Salmiya, Kuwait.  
P.O. Box 21119 - Safat 13072  
Tel: +965 2571 3531  
[www.kone.com.kw](http://www.kone.com.kw)

## Tunisia

KONE Elevators & Escalators SARL  
Ensemble Immobilier Miniar,  
Rue du lac d'Ourima,  
1053 les Berges du Lac  
Bureau B41 au 4ème étage - Bloc A.  
Tunis, Tunisia  
P.O. Box 1053  
Tel: +216 299 80610  
[www.kone.tn](http://www.kone.tn)

## East Africa (Kenya and Uganda)

KONE NAIROBI (Head Office)  
Mercure Hotel Annexe, 13th Floor,  
Longonot Road, Upperhill, Nairobi, Kenya.  
P.O. Box 35174 00100  
Tel: +254 115 848 603  
[www.kone.co.ke](http://www.kone.co.ke)  
[www.kone.ug](http://www.kone.ug)

## South Africa

KONE Elevators South Africa (Pty) Ltd,  
Unit 11, 11B Riley Road,  
Eastwood Office Park,  
Bedfordview Ext. 328, 2007  
P.O. Box 11540  
Tel: +27 11 035 1800  
[www.kone.co.za](http://www.kone.co.za)

## Türkiye

İçerenköy Mah. Değirmenyolu Cad.  
No:28 Asiaofispark B Blok D:3 Kat:2  
P.O. Box 34752 Ataşehir/İstanbul.  
Tel: +90 444 5663  
[www.kone.com.tr](http://www.kone.com.tr)

## Kazakhstan

KONE Kazakhstan LLP  
D.Konayev Street 12/1,  
floor 9, 010017,  
Astana, Kazakhstan.  
P.O. Box Astana 010000  
Tel: +7 702 335 3389/3317  
[www.kone.kz](http://www.kone.kz)

This publication is for general informational purposes only and we reserve the right at any time to alter the product design and specifications. No statement this publication contains shall be construed as a warranty or condition, express or implied, as to any product, its fitness for any particular purpose, merchantability, quality or representation of the terms of any purchase agreement. Minor differences between printed and actual colors may exist. KONE MonoSpace® DX, KONE EcoDisc®, KONE Care® and People Flow® are registered trademarks of KONE Corporation. Copyright © 2024 KONE Corporation.  
[www.kone.ae](http://www.kone.ae)

**Dedicated to  
People Flow™**